

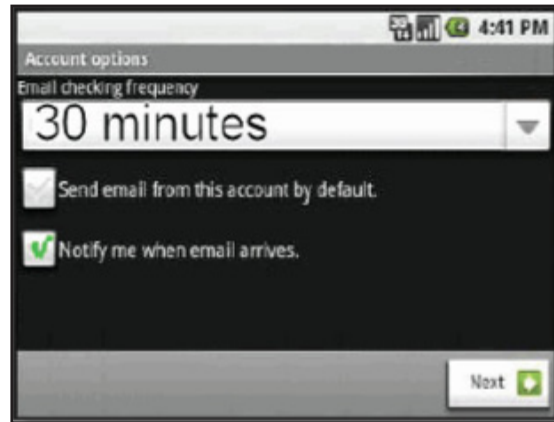
If you would like to learn more about the differences between POP and IMAP, please see the help topic, "POP vs. IMAP" here: <http://www.rackspace.com/apps/support/portal/4266/941/943/4012>

To set up Android for IMAP, do the following:

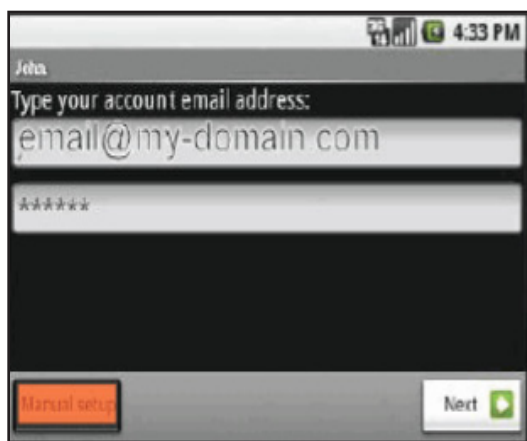
1. From the **Home** screen, tap the **Application** button and then tap the **Email** icon.
2. If this is your first email account, you will be presented with an email setup screen, tap the **Next** button. Otherwise, press the **Menu** button, tap **Accounts**, press the **Menu** button, and tap **Add account**.
3. Enter your entire email address (e.g., myname@mydomain.com) and in the second box, enter the password associated with your email account.
4. Tap the **Manual setup** button and then tap the **IMAP** button and enter the following information in the fields provided:
 - Username—Enter your entire email address (e.g., myname@mydomain.com).
 - Password—Enter the password associated with your email account.
 - IMAP server—Enter the secure server name: **secure.emailsrvr.com**
 - Port—Enter the secure port number: **993**
 - Security type—**Select SSL (always)**.

9. Tap the **Require sign-in** checkbox then tap the **Next** button and the device will connect to the internet and check your outgoing settings.

Note: On the **Account options** screen, make changes, as desired.



10. Tap the **Next** button. On the **Set up email** screen, enter your name in the **Type your name** field (this is the name that will be displayed in the From field of email messages you send) and then tap the **Done** button.



7. Tap the **Next** button. The device will connect to the internet and check your incoming settings.
8. On the **Outgoing server settings** screen, enter the following information in the fields provided:
 - SMTP server—Enter the secure server name: **secure.emailsrvr.com**
 - Port—Enter the secure port number: **465**
 - Security type—Select **SSL (always)**